

Merlin^{XL} Wizard Suite



Enhanced Oracle Hyperion Financial Management Reporting and Analysis

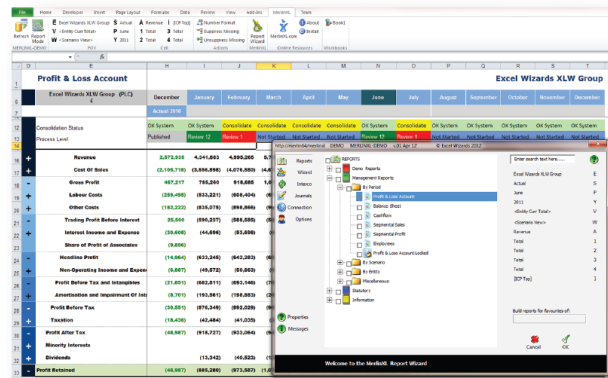
The Merlin^{XL} Wizard Suite is an Excel-based interface for Oracle Hyperion Financial Management (HFM).

Using the power and flexibility of Excel the Merlin^{XL} Wizard Suite adds features and functionality to HFM, enhancing the reporting and analysis functionality of any Oracle HFM application.

The Merlin^{XL} Wizard Suite is comprised of:

- Report Wizard
- Journal Wizard
- Intercompany Wizard

Each of the Merlin^{XL} Wizards is designed to enhance HFM reporting and analysis, whilst still maintaining HFM's core system security and data integrity.



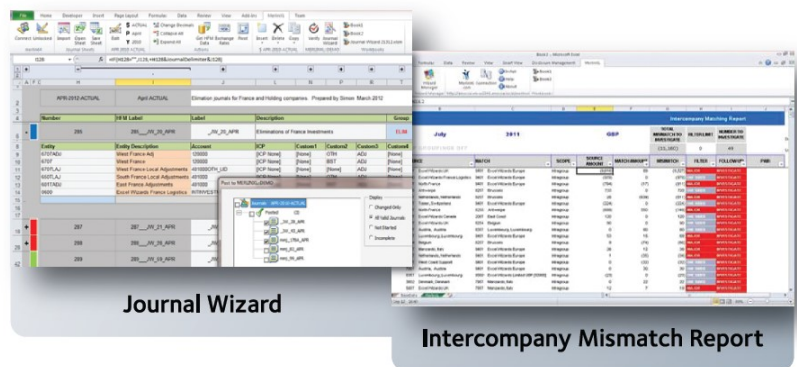
Significant process and reporting improvements

The Merlin^{XL} Wizard Suite significantly enhances the efficiency of building reports and analysing HFM data whilst complementing existing Oracle reporting tools such as SmartView.

With Merlin^{XL} Wizards users can:

- Predefine standard reports and templates which are made available centrally in a report library
- Drill down and across all HFM dimensions without any hard coded formulae
- Link dynamically to all HFM data, status and process management levels
- Extend the intercompany matching process
- Create, amend, review and analyse journals
- Collect and validate data for uploading into HFM Merlin^{XL}

Wizard Suite is compatible with Excel 2007, 2010 & 2013 and with all releases of HFM.



AMOSCA
 Address 10 Arthur Street London EC4R 9AY UK □ Tel +44 20 8659 5777
 Web www.amosca.co.uk □ www.merlinxl.com
 Email contactus@amosca.co.uk



Merlin^{XL}

Functional Overview



Report Wizard

Enhance the reporting and analysis functionality of Oracle HFM.

- Formula free data retrieval;
 - Simplifies analysis
 - Extends report distribution
- Multi directional data drill;
 - Formatting retained
 - Expands rows and columns across all dimensions
- Quick and simple ad hoc report creation Report library;
 - Structured templates and reports
 - Centralised repository of reports
 - Improves report security
- Journal reports;
 - Analyse journals for any Point of View
 - Drill down to view journals impacting any cell on a report
- Process Management status reports;
- Enhance Smart view;
 - Bi-directional SmartView report conversion
 - Drill down on SmartView formulae
- Simple SmartView formulae creation

“Both the Data Wizard and Report Wizard have significantly streamlined our reporting timeline and resulted in a much more efficient process end to end.”

Group Financial Controller, Sage

“The Report Wizard has revolutionised the way I report on HFM and I can’t imagine how I managed without it. There is no doubt the level of reporting and analysis we do is far superior and much easier than it would be without the Report Wizard.”

Group Financial Manager, Wolseley

Journal Wizard

Speed up and simplify the journal process.

- Create, modify and upload journals from Excel
- Export/import HFM journals into Excel
- Copy/Process Management
- Sequential journal numbering
- Verify journals before submitting
- Validate the impact of the journal before posting
- View translated values before posting

Intercompany Wizard

Significantly improve intercompany matching and analysis.

- Run intercompany reports in Excel
- User-friendly, customisable reports
- Sort and filter intercompany data
- Analyse intercompany data in a pivot table
- Drill-down on account balances
- “Instant Intercompany” displays reports in a browser including HFP Workspace and enables scheduling of intercompany report generation

Enhance Smart View Functionality

Use Merlin^{XL} functionality on existing Smart View reports

- Drill-down on SmartView formula
- Change the worksheet Point Of View using the Ribbon
- Automatically build the SmartView formula

“The Report Wizard has become an integral tool to all reporting processes out of HFM, offering standardised reports across the group, drill-down functionality enabling rapid ad hoc analysis, plus the user-friendly intercompany reports. The overall result is that controllers are able to spend more time driving action in response to reports, than reporting itself.”

Senior Financial Analyst, Mondi Group