



Merlin^{xl} Report Wizard

What is the Merlin^{xl} Report Wizard?

The Merlin^{xl} Report Wizard is a complementary product to Oracle Hyperion Financial Management (HFM), that will enhance and further develop the reporting functionality of any Oracle HFM implementation.

The Report Wizard combines the functionality and ease of use of Excel with the distribution capabilities of the Internet.

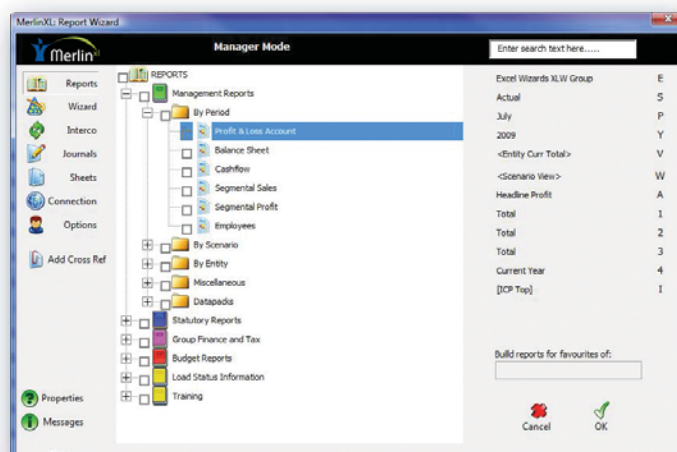
Report Wizard can deliver significant benefits if you are:

- Looking to improve on your current level of reporting and analysis in Excel
- Looking for a way to effectively manage the maintenance of your Excel reports
- Struggling to centralise and control Excel reporting across your organisation
- Looking to improve your intercompany matching process
- Looking to review journals in Excel

The Report Wizard is fully compatible with Excel 2003 and 2007 and with all versions of Oracle HFM.

Build high quality reports with just three mouse clicks or design complex bespoke reports exploiting the powerful functionality of Excel.

The product is fully supported, with on site and online training programmes and user guides.



What our customers say

"The Report Wizard has revolutionised the way I report on HFM and I can't imagine how I managed without it.

There is no doubt the level of reporting and analysis we do is far superior and much easier than it would be without the Report Wizard."

Group Consolidation Manager, Wolsley plc

"The Report Wizard has become an integral tool to all reporting processes out of HFM, offering standardised reports across the group, drill-down functionality enabling rapid ad hoc analysis, plus the user-friendly intercompany reports.

The overall result is that controllers are able to spend more time driving action in response to reports, than reporting itself."

Senior Financial Analyst, Mondi Group

30 day evaluation

We are so confident that you will want to permanently enjoy the benefits of the Merlin^{xl} Report Wizard that we are happy to provide you with a free, 30 day evaluation of the software.

Contact us

To request an evaluation, arrange a demonstration or discuss how the Merlin^{xl} Report Wizard can dramatically improve your Oracle HFM reporting, call us on : 0845 625 5777 or email us at : contactus@amosca.co.uk



Merlin^{xl} Report Wizard

Report library

- Gives all users access to a suite of high quality reports
- Delivers reports directly to Excel via the Intranet/Internet
- Reports can consist of one sheet, multiple worksheets or entire workbooks

Drill-down and drill-across

- Double-click to drill-down or drill-up on rows and columns in the report
- Right-click to drill across any dimension from any cell in the report
- Drill to children, base members or descendants

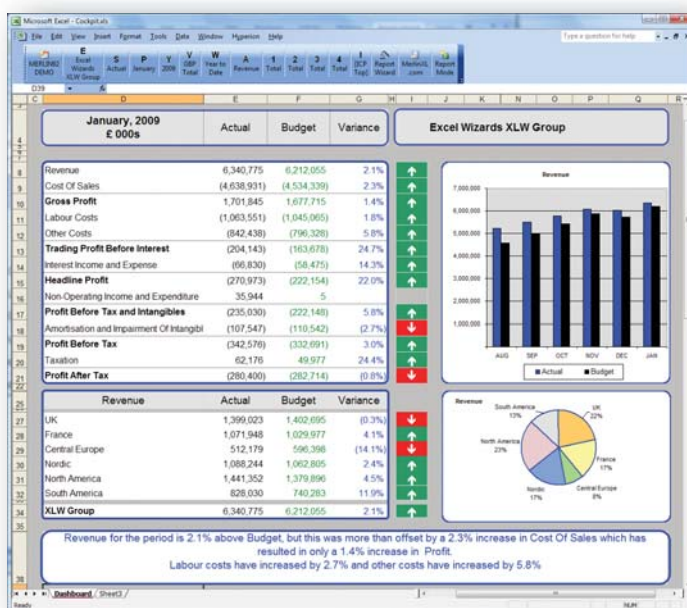
Excel Wizards XLW Group	December 2008	June	July	August	September	October	November	December 2009
Revenue	1,227,096	1,787,689	1,680,271	1,523,650	1,495,465	1,841,492	1,695,279	1,363,440
Cost Of Sales	(886,924)	(1,287,183)	(1,175,518)	(1,099,322)	(1,078,099)	(1,342,238)	(1,232,062)	(985,471)
Gross Profit	340,172	500,506	504,753	424,328	417,366	499,254	463,217	377,969
Labour Costs	(189,617)	(222,657)	(218,489)	(201,924)	(200,336)	(227,175)	(217,462)	(210,686)
Other Costs	(131,814)	(146,527)	(158,424)	(132,198)	(135,680)	(154,536)	(152,652)	(146,460)
Trading Profit Before Interest	18,741	131,322	127,840	90,206	81,351	117,543	93,102	20,823
Interest Income and Expense	(10,984)	(10,445)	(13,047)	(3,320)	(20,049)	(10,987)	(11,512)	(12,204)
Headline Profit	7,757	120,877	114,792	86,885	61,301	106,555	81,590	8,619

Ad hoc analysis

- Easily customise pre-built reports
- Build ad hoc reports from a blank worksheet
- Multiple retrieval ranges on a single worksheet
- Will build the corresponding SmartView formula if required

Point of View toolbar

- Know at a glance the Point of View of your report, using the Report Wizard command bar
- The Point of View is saved with the worksheet



Exploits the power and flexibility of Excel

- Makes full use of Excel functionality. The complexity of your report is limited only by your knowledge of Excel

Intercompany matching

- Produces intercompany matching reports in two formats: workflow and pivot table
- Sort and filter mismatches to help identify the likely corresponding mismatch

Journal reports

- View all journals for a selected Point of View
- Right-click to drill through to the journals that have impacted any cell on the report

Data types

- Display the consolidation status, process level information and cell text
- Upload cell text, run calculations and consolidations

Integrates with Oracle HFM

- Uses Oracle HFM security throughout
- Exploits the Oracle HFM API (Application Programming Interface)
- Compatible with all versions of Oracle HFM and with Excel 2003 and Excel 2007

